

# DATA CONSOLIDATION

STREAMLINE AND SIMPLIFY YOUR  
BUSINESS!



# ABOUT US

## OUR COMPANY

WE ARE AN INFORMATION TECHNOLOGY CONSULTING COMPANY THAT FOCUSES ON **CUSTOMIZING, SIMPLIFYING AND INNOVATING** IT SOLUTIONS FOR BUSINESSES OF ALL TYPES. BEING IN THE IT INDUSTRY FOR **16 YEARS**, WE HAVE ACCUMULATED A SIGNIFICANT RANGE OF EXPERIENCES THAT ENABLE OUR COMPANY TO CONTINUE PROVIDING VALUE TO BOTH PRESENT AND FUTURE BUSINESSES.

BUSINESS INDUSTRIES THAT WE HAVE WORKED IN.

**LOGISTIC**



**FMCG**

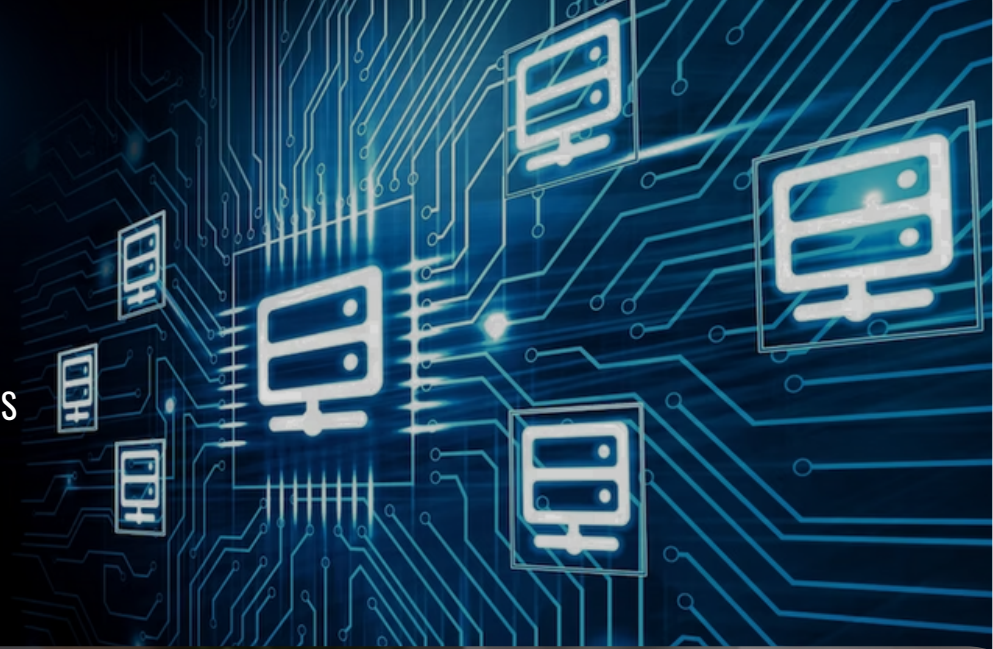
**TRADING  
AND  
SERVICES**

**MANUFACTURING**

**+ MORE INDUSTRIES!**

## WHAT IS DATA CONSOLIDATION?

DATA CONSOLIDATION IS A PROCESS OF UNIFYING DATA FROM MULTIPLE SOURCES INTO A CENTRALISED DATABASE.

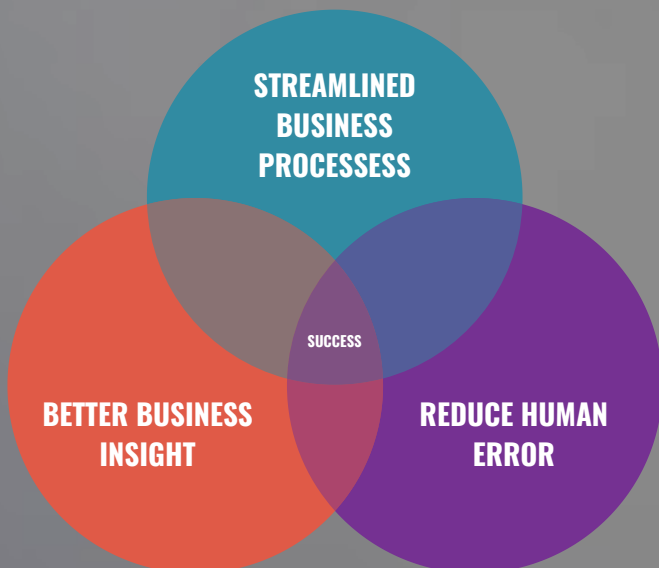


## WHY IS IT IMPORTANT?

THE OLDER WORKING DAYS HAVE PROVEN THAT THE **MANUAL WORKING PROCESS IS INEFFICIENT**. DATA CONSOLIDATION ENABLES THE BUSINESS TO COMBINE ITS DATA INTO A UNIFIED VIEW TO **GARNER INSIGHT AND BETTER UNDERSTANDING**.



## WHAT'S THE BENEFITS?



# WHAT ARE THE FEW EXPERIENCES OF OUR BUSINESS CONTRIBUTIONS?



## ● ALUMINIUM MANUFACTURING

A manufacturing company was using Excel sheets to track their data manufacturing process. They struggled to get a complete view of their reports and order forecasts for their business. We help them by implementing a consolidated sales and production tracking system to combine their data to garner **better business insight**.



## ● OIL AND GAS DETECTION COMPANY

A gas detection company received a number of customer complaints for its failure in meeting customer needs. We decided to lend them a helping hand to resolve this predicament. **We then discovered that they lack a streamlining system that will reduce errors and delays on their products. Thus, we help them to develop an RMA system to streamline their working procedure leading to reduced human error and streamlined business workflow.**

## ● BABY PRODUCT COMPANY

A baby product company was experiencing continuous sales and product value growth. With constant growth comes a rise in workload. Over time, their warehouse began to be flooded with inaccurate inventory count, difficulty in locating items, slow picking time, and slow shipping times. **We help them by creating an end-to-end order fulfilment process where the company's existing system and therefore, reducing human error.**

# THESE ARE THE CONTINUATION OF OUR BUSINESS EXPERIENCES!



## ● PLASTIC MANUFACTURING

A plastics manufacturing company was having trouble keeping track of the raw materials used on the assembly line and the inventory of finished goods. Meeting consumer wants and needs become more challenging as a result. We help them by developing Warehouse Management Solution that we **integrate with their ERP system.**



## ● DEVELOPER COMPANY

A developer company with multiple locations and departments executes their usual budgeting management process. They eventually came to a realization that a huge chunk of time was used during the budgeting process, leading to lower levels of productivity. **We help them by automating data collected from all departments and developing a system with real-time monitoring of budgets leading to better business insight and reducing human error.**

## ● SMB LOGISTIC COMPANY

An SMB Logistic company was facing difficulty in completing their task on time and managing customers' expectations and needs. They experience a lot of delays and human error that leads to customer dissatisfaction. **We help them by developing automated order routing and tracking to improve the speed and accuracy of order fulfilment. We also help them to develop a system with real-time tracking and reporting.**



**"GREAT THINGS IN BUSINESS ARE NEVER DONE  
BY ONE PERSON."**

**- STEVE JOBS**

# CONTACT US!

## LOCATION

NO 9B, 1ST FLOOR, JALAN PJS 1/27, 46150 PETALING  
JAYA, SELANGOR

## EMAIL

[sales@linexcom.com](mailto:sales@linexcom.com)

## CONTACTS

DARREN - 0193526820  
WILLIAM - 0193377536  
ANSON - 0196736820

